



NEW! Wahl CHIEF INSPECTOR



**Highest level of Resolution
Designed for the Professional**

BEST-IN-CLASS!

The a70 and z70 models include a 384 x 288 array with 110,592 pixels — 44% more pixels than 320 x 240 thermal imagers with 76,800 pixels.

Fully calibrated, high resolution camera captures clear, sharp images!

Easily load images to an iPad® using an SD adapter. The thermal images can be imported and stored in the regular photo application found on the iPad®, or used with a picture application like iPhoto®. The images can then be shared with other applications on the iPad®, offering the flexibility of easy to prepare reports.

Two temperature modes allow you to switch between the ranges of -4° to 356°F (-20° to 180°C) or 212° to 1112°F (100° to 600°C) to select the temperature range required for your application.

Temperature readings are always accurate. Quick stabilization circuitry enables the camera to acclimate to sudden ambient temperature changes in just a few minutes, compared to 30 - 45 minutes with other cameras.

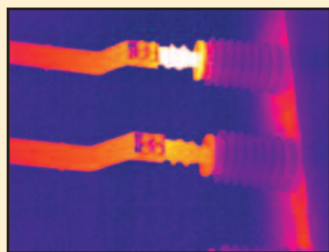
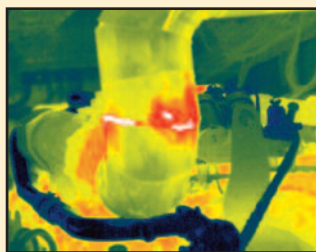
Simultaneously captures both a thermal and visible light picture, or either individually, with one pull of the trigger. View or download images to included Wahl Report Writer software, or an iPad®, with selectable voice recording, up to 45 seconds per picture.

Thermal line analysis allows the user to select a target of interest as a temperature reference point, and show a relative comparison as a percentage between the target temperature and the temperatures in the surrounding area. This enables the user to quickly find potential problem areas in need of further attention.

The z70 frame rate is 30Hz. The a70 features a 9Hz frame rate for export without license restrictions.

TWO YEAR
2
WARRANTY

IP54



Find problems quickly, easily, and safely with the Wahl z70

Including SPY-CARE™

The FIRST No-Fault warranty plan in the industry is INCLUDED with your purchase!

We will repair or replace your camera for two years, for any reason - even if it's your fault - no questions asked!

Also includes:

FREE Training, FREE Phone Support,
FREE Annual lifetime recalibration, inspection, and
firmware upgrades. (Excludes Battery and SD Card, see
Spy-Care flyer on our website for more details.)

Heat Spy® is a registered trademark of Wahl Instruments, Inc.
iPad® and iPhoto® are registered trademarks of Apple.

Specifications subject to change without notice

www.wahlheatspy.com

Digital version of catalog may differ from printed version.

Palmer Wahl • 234 Old Weaverville Road • Asheville • North Carolina • 28804
sales@palmerwahl.com • Phone: (800) 421-2853 • FAX: (828) 658-0728

PW1282
May 2013 Rev A

a70 • z70 CHIEF INSPECTOR Specifications

Model Number	a70	z70
Frame Rate	9Hz	30Hz*
Sensor Info		
Detector	Uncooled Microbolometer Focal Plane Array (EPA)	
Detector Resolution	384 x 288	
Spectral Range	8 - 14µm	
Thermal Sensitivity	≤ 0.06 @ 30°C	
Image Performance		
LCD Display	High Resolution 3.5" Color LCD Screen, 640 x 480	
Visible Light Camera	1.3 Megapixel CMOS Sensor	
Lens Parameter		
Field of View	25° x 19°	
Focus Range	0.1 m to ∞ and beyond	
Focus Type	Manual	
Spatial Resolution	1.37 mrad**	
Measurement Analysis		
Measurement Range	-4° to 356°F (-20° to 180°C) or 212° to 1112°F (100° to 600°C) Low/High Temperature User Switchable:	
Measurement Accuracy	Greater of ±2% of reading or ±2°C Instrument is not calibrated below -10°C.	
Image Control	11 Display Color Palettes: Ironbow; Negative Grayscale; Positive Grayscale; Amber; Hot Metal; Cool Metal; Rainbow Green-Red; Rainbow Blue-Red; Rainbow Black-White; High Contrast Blue-Yellow; and High Contrast Violet-White Image Adjustment: Auto Ranging / Manual Level and Span / Adjustable Display Brightness Control	
Measurement Correction	Auto Correction of Microbolometer with Adjustable Time Interval or Push Button Manual	
Measurement Mode	Spots, Areas, Lines, Isotherms, Delta T, Alarms (Multiple Audible and Visible)	
# of Measurement Spots	1 Hot, 1 Cold, plus 2 Adjustable	
# of Measurement Areas	Up to 3 Movable and Sizeable Areas (Max, Min and Avg Temperatures)	
# of Measurement Lines	Up to 2 Moveable Lines, 1 Vertical, 1 Horizontal; Image Temperature Profile Lines	
T Reflect	Manual Adjustment	
T Correct	Manual Adjustment	
IR Digital Zoom	X 2 or X 4	
Thermal/Visible Image	Toggle between Thermal and Visible Light	
Alarm	High and Low Temperature Audible and Visible Alarm; Isotherm Visible Alarm	
Temperature Scale	User Selectable: °C, °F, and K	
User Settings	Date/Time, Temperature Unit, Brightness/Contrast, LCD Brightness, and 11 Languages: English; Spanish; French; German; Italian; Portuguese; Korean; Japanese; Russian; Simplified Chinese; and Traditional Chinese	
Emissivity Range	Adjustable from 0.01 to 1.00 with Built-in Emissivity Table	

*Export Licensing Fee on 30Hz models may be required for your country, subject to US Government approval. No Export License required on 9Hz models.

** 384 x 288 is not directly convertible to 640 x 480 imager display. Image is displayed as a 320 x 240 image. Full 384 x 288 resolution image, (1.09 mrad), downloads to computer.

Model Number	a70	z70
Image Storage		
Removable Storage	2GB SD / Time Stamped	
Storage Mode	Manual Single Image Save or Programmable Auto Save to SD Card	
File Format (Thermal)	JPEG plus Temperature in 14 bit data	
File Format/Size (Visible)	JPEG / 100K (Typical Value)	
Voice Annotation	Maximum 45 seconds per image	
Text Annotation	NA	
Laser		
Laser Pointer	Class 2, < 1mW / 635nm, Red	
Record		
Report Analysis Software	Yes	
Video Output	User Selectable PAL and NTSC	
Freeze Frame/Save Image	Freeze Frame and Save Image, Thermal and/or Visible to SD Card	
Environment		
Ambient Operating Temperature	5° to 122°F (-15° to 50°C)	
Storage Temperature	-4° to 140°F (-20° to 60°C)	
Humidity	≤ 90% non-condensing	
IP Rating	IP 54	
Power		
Power	1 Rechargeable Lithium Ion Battery	
Operating Time	2 Batteries provide approx 4 hours operation	
Power Save Mode	Selectable Time Interval Auto Sleep to save battery, Auto Shut Off	
Charging System	External AC Battery Charger included; In Camera Charging with optional AC/DC Battery Charger; 12V DC Car Charger	
General Info		
Housing	Impact Resistant Molded Plastic and Wrist Strap	
Mounting	Hand Held with Tripod mounting / 1/4"-20 Thread	
Dimensions	Width: 4.5 in. (115mm) x Length: 5.9 in. (150mm) x Height: 9 in. (230mm)	
Weight (w/o battery)	1.65 lbs (0.75 Kg)	
Software Compatibility	Microsoft Windows 2000, Windows XP, Vista, and Windows 7	
Included Accessories	Spy-Care, Carrying Case; Wrist Strap; Lens Cap; 2 Rechargeable Lithium Ion Batteries; External AC Battery Charger; Video Out Cable; Heat Spy Report & Analysis Software; SD Card/Reader; User Manual.	
Optional Accessories	NIST Traceable Certificate of Conformance; Extended Warranty; Auxiliary Charging Kit with: 12V DC Car Charger, AC/DC Power Supply/Charger and International Plugs	
Safety Certificates		
Shock Test	25G, IEC68-2-29	
Vibration Test	2G, IEC68-2-6	
Immunity Tests	Yes	
Emission Limits	Yes	

*Specifications subject to change without notice
Heat Spy® is a registered trademark of Wahl Instruments, Inc.*



IP54



www.wahlheatspy.com

Palmer Wahl • 234 Old Weaverville Road • Asheville • North Carolina • 28804
sales@palmerwahl.com • Phone: (800) 421-2853 • FAX: (828) 658-0728

PW1282
May 2013 Rev A